

Creating A Thriving Family Business

Progress Not Perfection

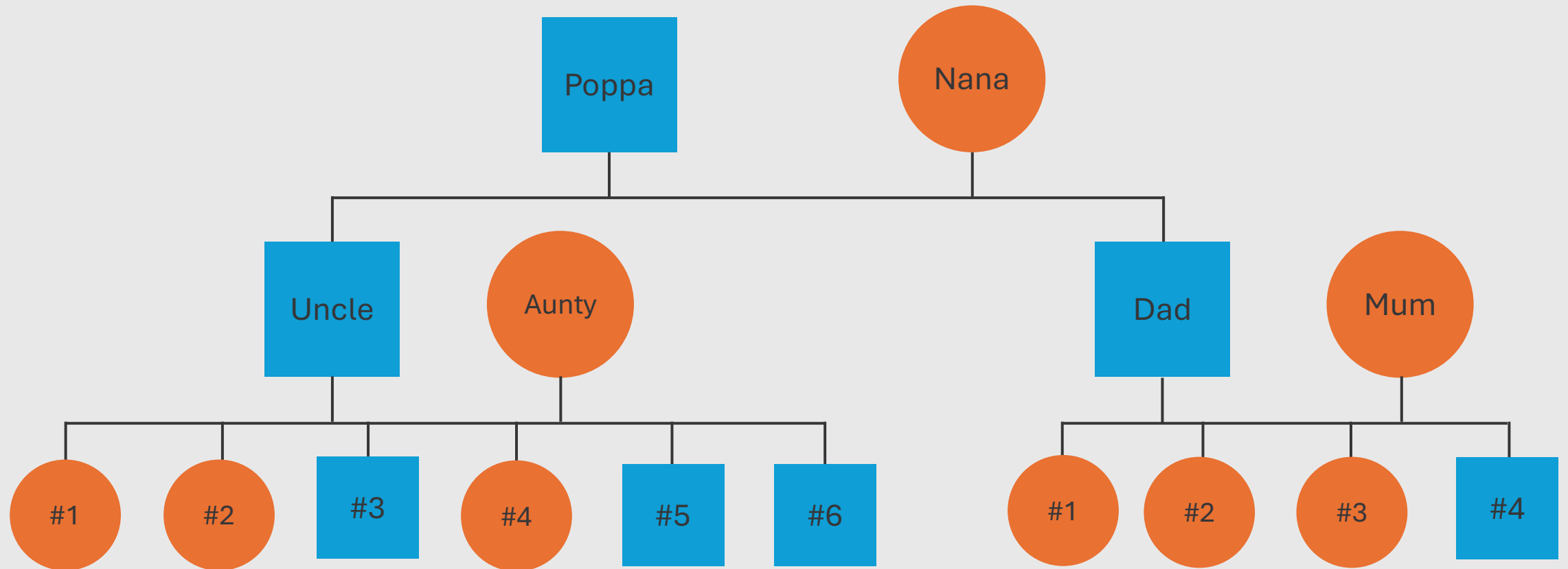


WA FBA // Insight Event 2025

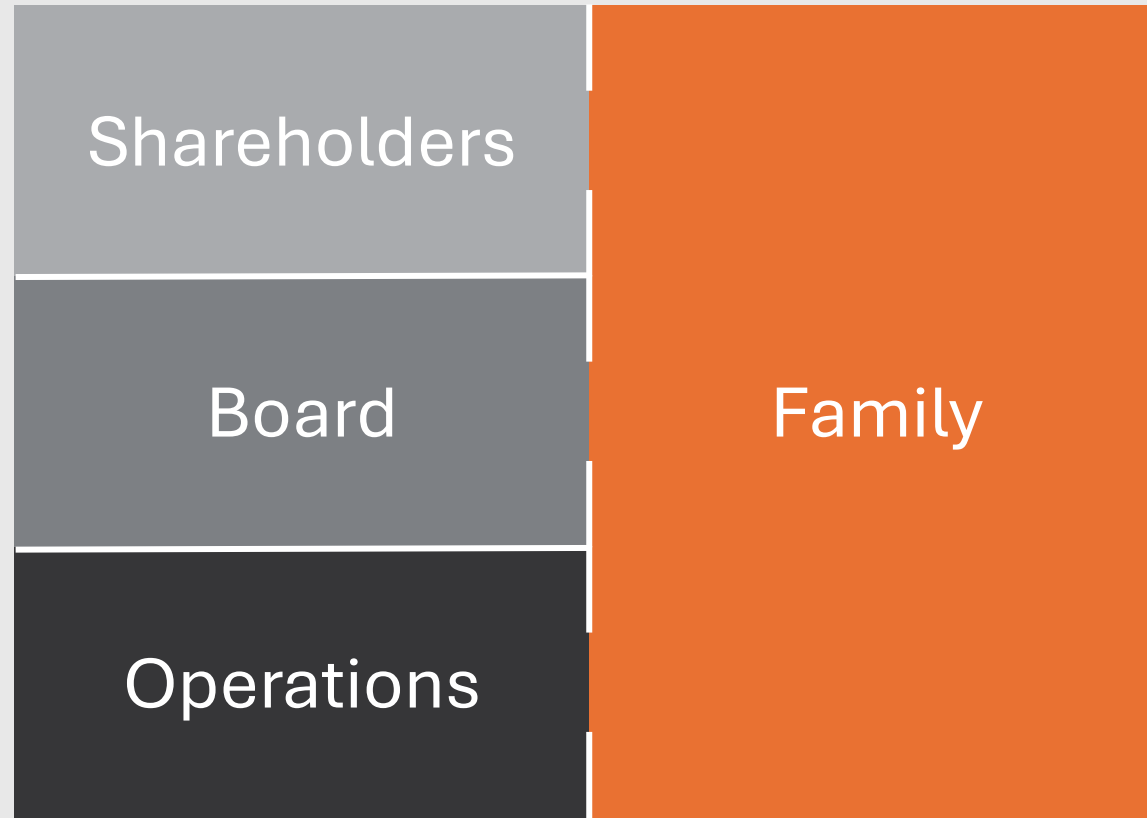
BROONS & SONS



Unite

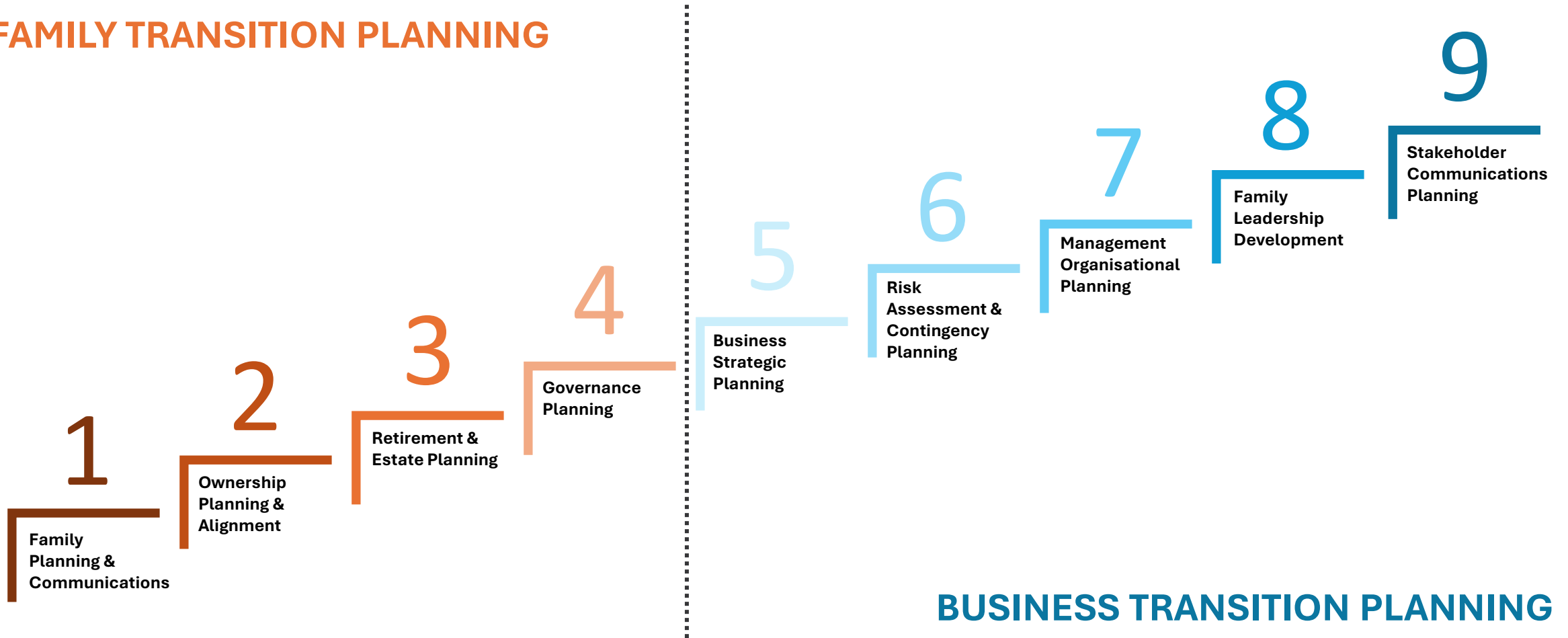


Build



Transition

FAMILY TRANSITION PLANNING

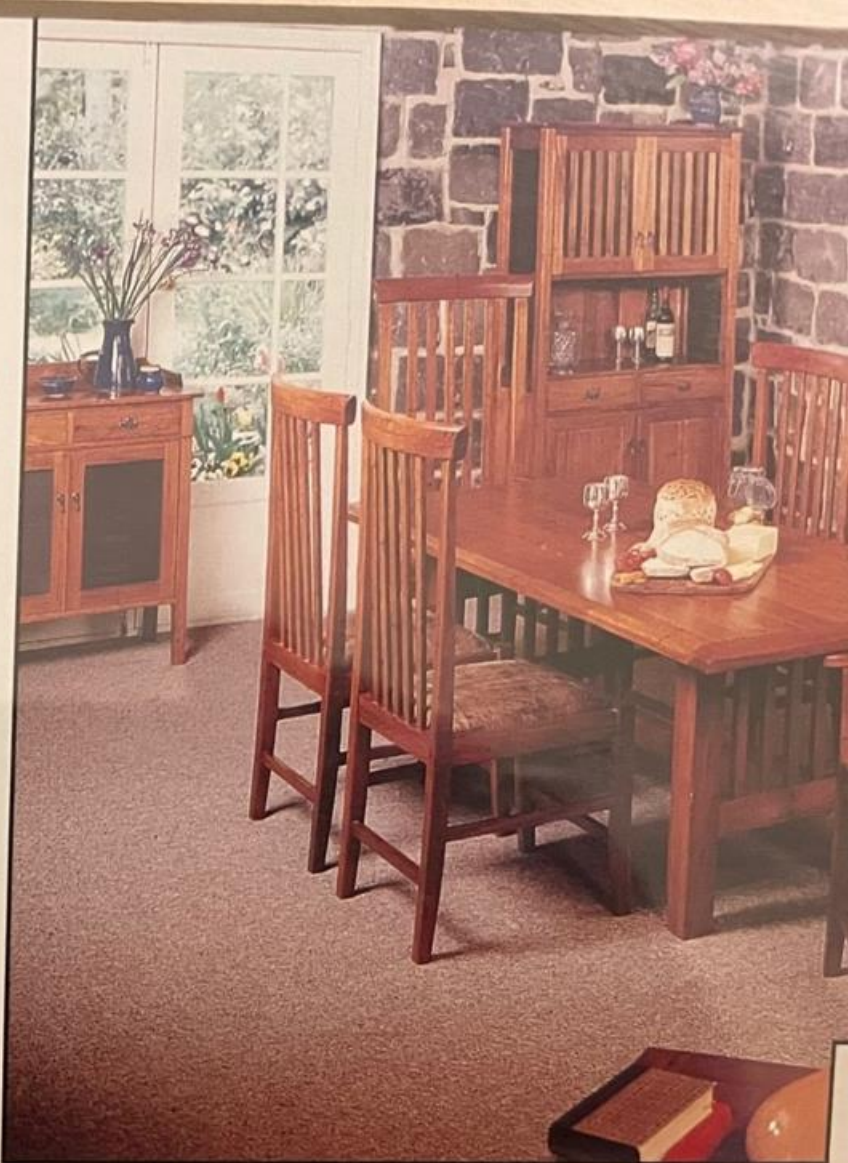




Rex Carr selects pieces of Messmate timber which show the characteristic features of kino, veins and borers.



John Broons, managing director of the Smith Bros sawmills which prepares the Australian hardwoods used by Wentworth Furniture.



Wentworth Furniture in their continuing pursuit of design and innovation have joined

Heirloom furniture



Finding the Right Advisor

Need an external Advisor

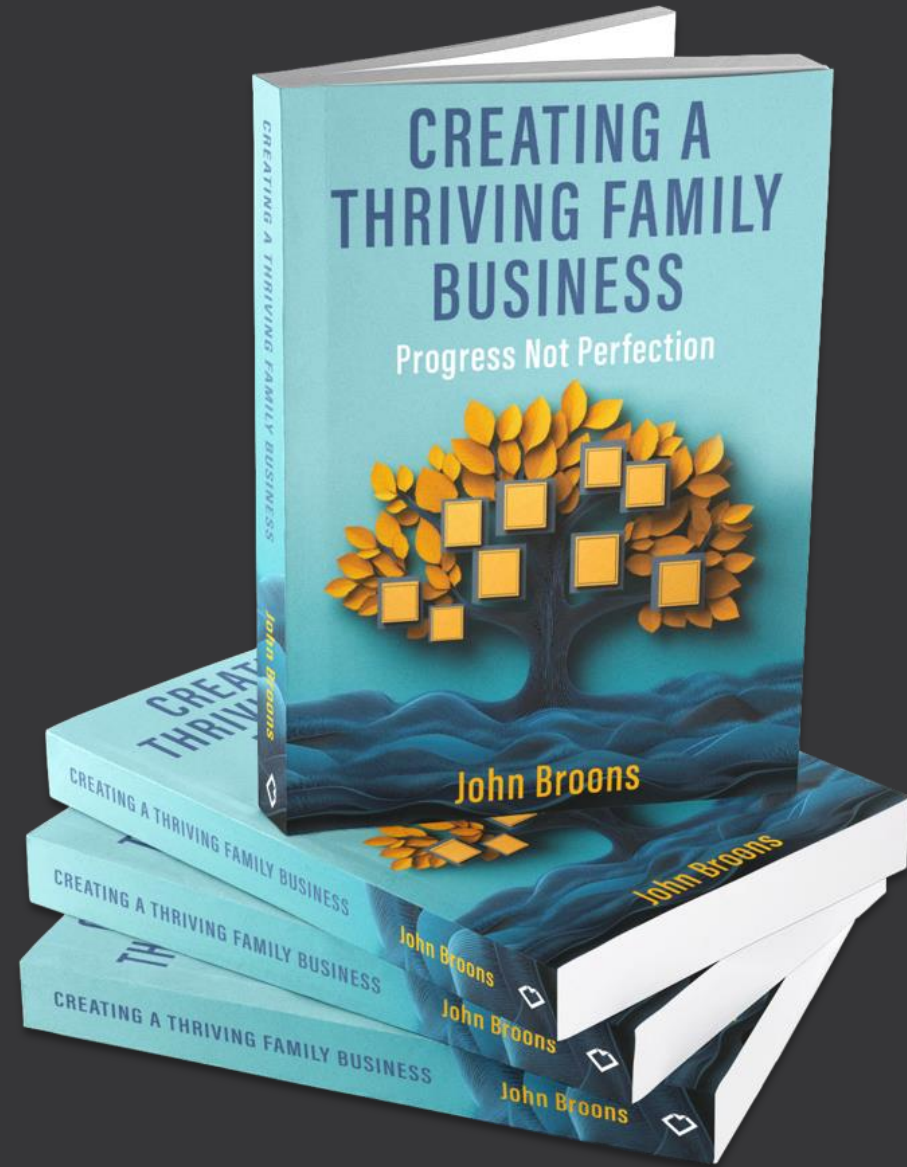
- Cultural match
- Experience – FBA, FFI, etc.
- References
- Tools
- Bias

Interdisciplinary Approach

- Finance
- Legal
- Family Dynamics
- As the family and business grow we need more “niche” advice and support

Let's keep in touch!

Subscribe to
my newsletter



Questions?

Thank you



0433 131 070
john@johnbroons.com